



SULFUR AND HALOGENS/CHLORINE IN PETROLEUM PRODUCTS (BOMB METHOD)

ASTM D129 - ASTM D808 - ASTM D1662 - IP 61 - NFT 60109 - obs.DIN 51577

DEFINITION:

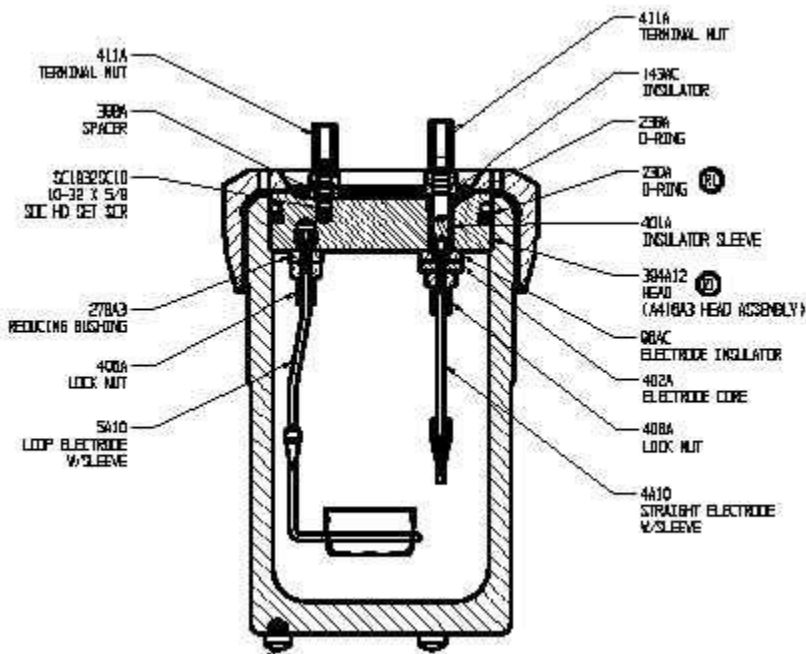
ASTM D 129 - ASTM D1662 - IP 61 - NFT 60109 - obs.DIN 51577

This test method covers the determination of the %mass content of sulfur in petroleum products which contain at least 0,1% and at most 99% S (lubricating oils containing additives, additive concentrates, and lubricating greases that cannot be burned completely in a wick lamp), after burning a sample in O₂ atmosphere.

ASTM D 808 - obs.DIN 51577

This test method covers the determination of chlorine in new and used lubricating oils and greases additives, and in additive concentrates. Its range of applicability is 0,1 to 99% Cl, F, Br and 0,1 to 97% I. This instrument is as well suitable to be used for oils and waxes of synthetic, phylogenetic or animal origin, phosphor or metals.

SPECIFICATIONS



Our Sulphur and Chlorine Pressure Vessel Test Equipment model SCL0 is an accurate, repeatable and safe instrument including a 300 ml combustion pressure cylinder, charges 0,05 to 1,5 g depending on the sample type, double walled, FULLY MADE OF STAINLESS STEEL, two electrodes, a cover with

threaded sliding ring, a gasket around the cover edge, an automatic inlet valve, an exhaust needle valve tested to 300 Bar, and a start switchboard.

Our Ignition Assembly model SCL2 is housed in a plate box coated with anti-acid epoxyd, a low voltage outlet for connection with the electrodes of the cylinder, a start button, an Ammeter, and an O2 pouring regulator.

Our Reduced Gear model SCL3 is fitted with two manometers, a safety valve, a calibration wheel up to 50 Atm., a pin valve, a capillary copper junction with connection for cylinder charge, and a cover support

Model SCL4 is an opaque quartz capsule boat with support edge

Model SCL1 is a 3 ml cap

Model SCL7 is a a 0.01 mm diameter iron ignition wire

ACCESSORIES:

Platinum ignition wire 0.4mm diameter

Platinum capsule

Cloth wire

Water bath for cooling

SPARES:

Iron ignition wire

Platinum ignition wire

Platinum capsule

Cloth wire

Cylinder

Ignition assembly

Reducer gear

Ammeter

Bipolar green switch

Pushbutton

Transformer 220/12V

Socket block

Gasket

Automatic valve

Internal support for valve

Internal tube for O2 inlet