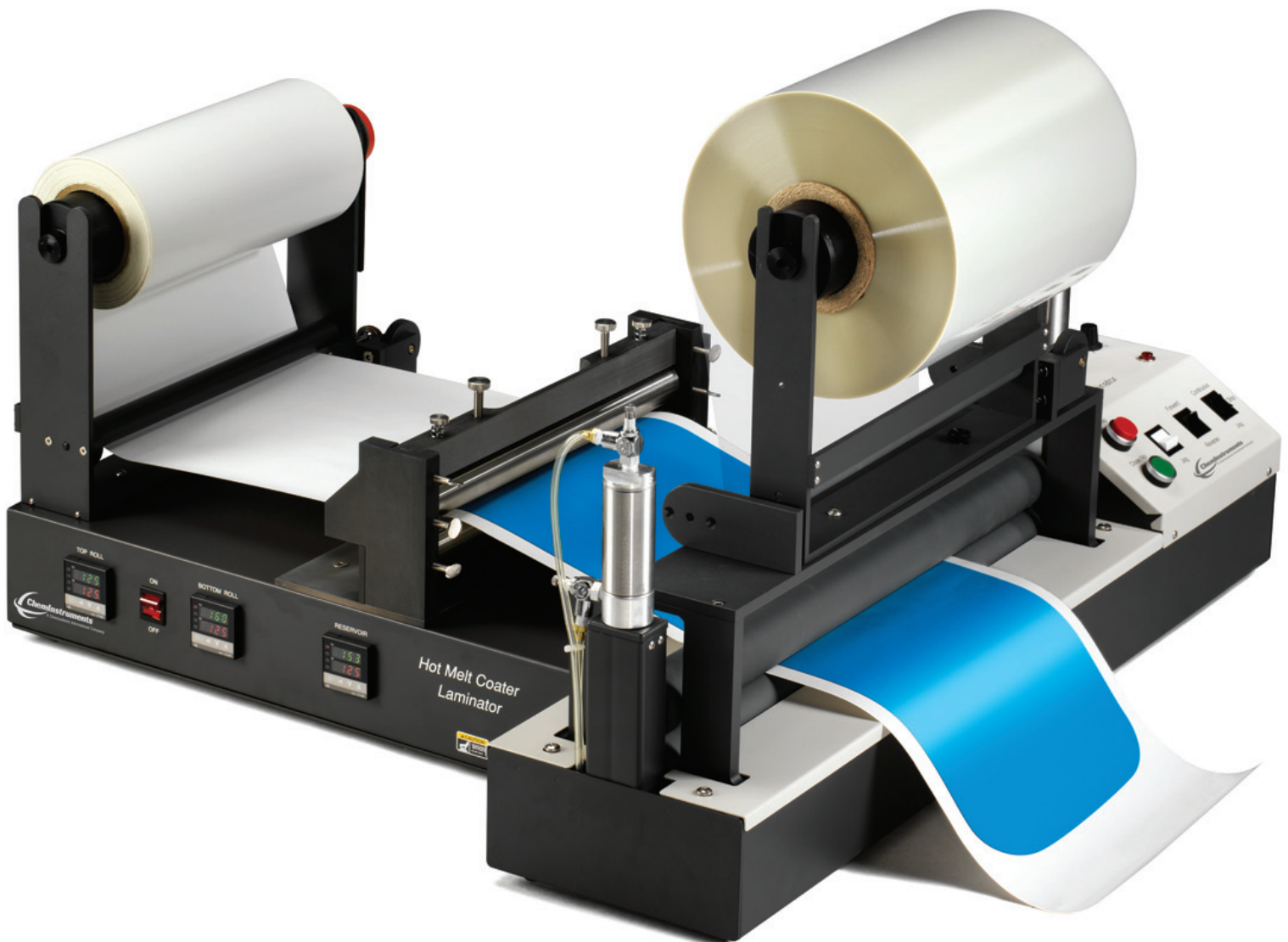


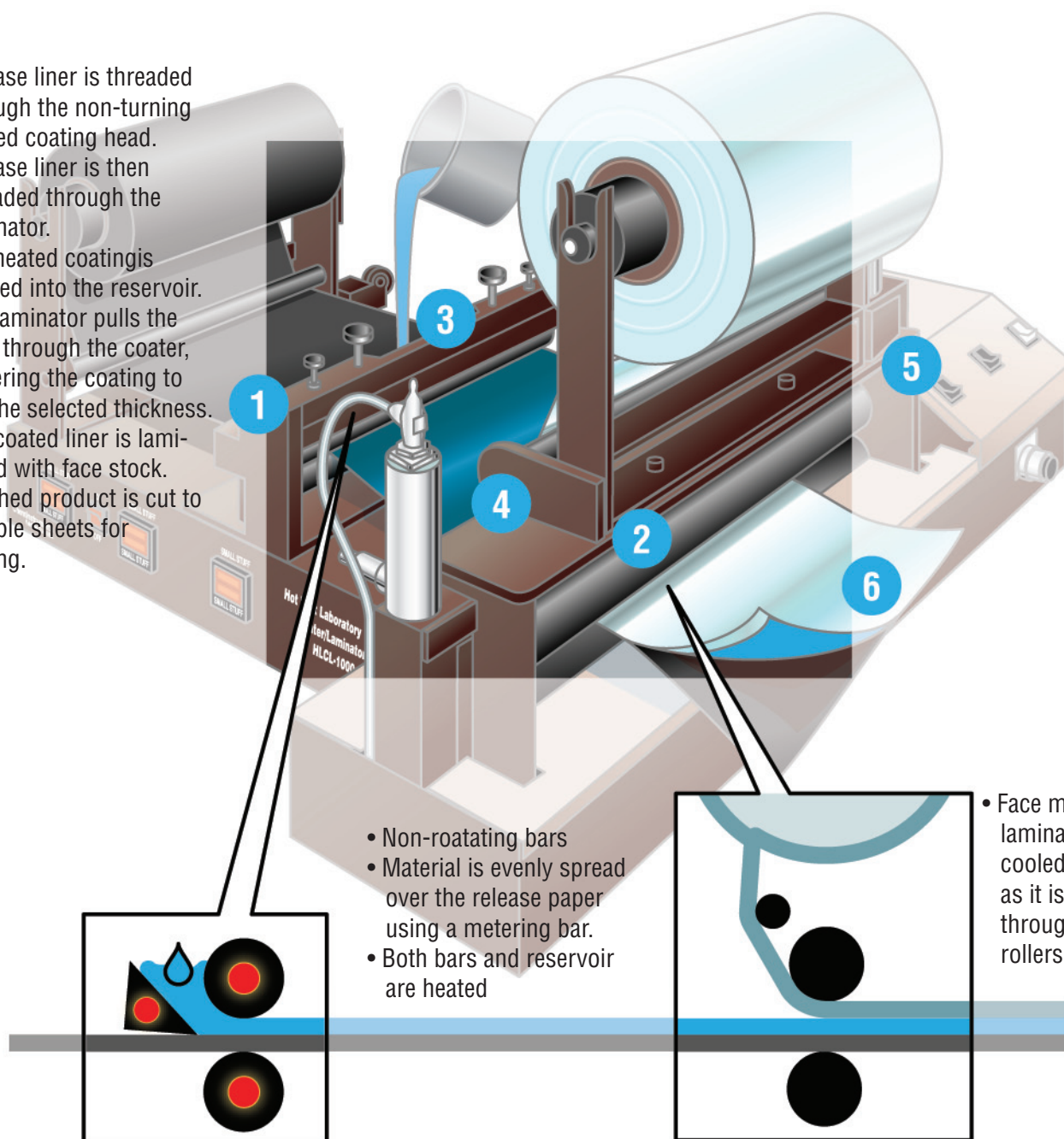
Hot Melt Coater/Laminator

The precision laboratory benchtop Hot Melt Coater/Laminator is capable of producing coated samples of hot melt adhesives, and then laminating to a variety of foils, films, and papers. Lab scale simulations of production processes can be easily set up and studied. The Hot Melt Coater/Laminator is designed to consistently coat hot melt formulations with the following features:

- Self contained brake unwinds for adhesive carrier and facestock
- Requires a 110V/20A circuit and compressed air source
- Pivot control on adhesive carrier and facestock to control web alignment
- Laminating speed and pressure are controllable
- Coater reservoir capacity up to 125 grams
- Maximum operating temperature 400° F (204° C)
- Clean up is easily accomplished through quick, uncomplicated disassembly
- Skilled operators have reported good coatings down to 0.25 mil thickness
- Generates sample laminates as long as needed
- Precision ground coating bars
- Both coating bars and the back reservoir are heated independently
- Width of coating can be controlled by teflon insert side dams
- Durable aluminum and steel construction means a long machine life with consistent performance
- Variable speed controller can be adjusted to laminate up to 7.5 fpm (2.25 mpm)



- 1 Release liner is threaded through the non-turning heated coating head.
- 2 Release liner is then threaded through the laminator.
- 3 Pre-heated coating is poured into the reservoir.
- 4 The laminator pulls the liner through the coater, metering the coating to the selected thickness.
- 5 The coated liner is laminated with face stock.
- 6 Finished product is cut to sample sheets for testing.



- Non-rotating bars
- Material is evenly spread over the release paper using a metering bar.
- Both bars and reservoir are heated

- Face material is laminated onto cooled coating as it is drawn through the rollers.



Release Paper: 6" (15cm) wide by 500 yards (480m) long and 12" (30cm) wide by 500 yards (480m) long.



Film: 1 mil by 12" (30cm) wide by 1600 yards (1500m) long and 2 mil by 12" (30cm) wide by 800 yards (750m) long.