

DV-II+ Pro Viscometer

...our most versatile, continuous sensing viscometer

Displayed info:

- Shear Rate/Stress
- Viscosity (cP or mPa·s)
- % Torque
- Speed/Spindle
- Temperature (°C or °F)

Customizable Options

Complete Computer Control
with optional Rheocalc Software

Accuracy: $\pm 1.0\%$ of Range
-Repeatability: $\pm 0.2\%$

Built-in RTD Temperature Probe



Bi-Directional RS-232 PC Interface
provides optional computer control and
automatic data gathering capability

Scroll Keys
for simple selection of speed and spindle

Download Custom Test Programs
with DV Loader Software (included with
instrument)

54 Selectable Speeds
provides superior range of viscosity/shear rate
measurements

Auto Range Showing
-Full Scale Range (FSR) at 100%
-Maximum Viscosity Measured with
Spindle/Speed Combination

MODEL	VISCOSITY RANGE cP(mPa·s)		SPEEDS	
	Min.	Max.	RPM	Number of Increments
LVDV-II+P	1†	6M	.01-200	54
RVDV-II+P	100††	40M	.01-200	54
HADV-II+P	200††	80M	.01-200	54
HBDV-II+P	800††	320M	.01-200	54

† 1 cP achieved with UL Adapter accessory. 15 cP on LV with standard spindles.
†† Minimum viscosity is achieved with optional RV/HA/HB-1 spindle.
M = 1 million cP = Centipoise mPa·s = Millipascal/seconds

What's Included?

Instrument

6 spindles (RV/HA/HB)

or 4 spindles (LV)

Spindle Guard Leg*

Lab Stand (Model S)

Carrying Case

*Not applicable to HA or HB versions

Optional Accessories

RTD Temperature Probe

NEW Ball Bearing Suspension (RV/HA/HB)

Viscosity Standards

RV/HA/HB-1 Spindle

Quick Action Lab Stand

Temperature Bath

Small Sample Adapter

UL Adapter

Thermosel

Helipath Stand with T-bar Spindles

Spiral Adapter)

DIN Adapter

Quick Connect/Extension Links

Vane Spindles



DV-II+ Pro Viscometer

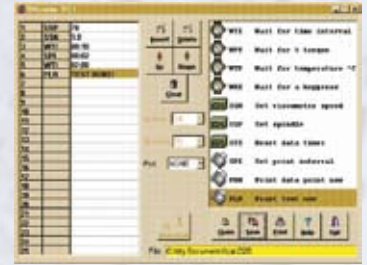
The DV-II+Pro is available in a Wells/Brookfield Cone & Plate Version

DV Loader Software Included

Create custom tests using your PC

DV Loader allows users to create repeatable custom tests with choices of parameters for speed, test duration, etc. to be downloaded from a PC to a DV-II+ Pro Viscometer.

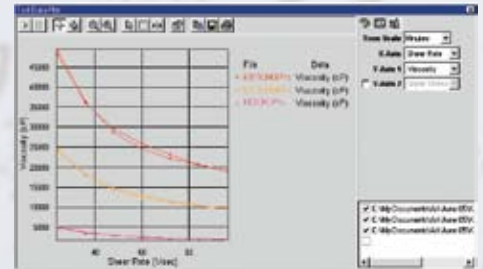
Disconnect the DV-II+Pro from the PC for secure, user-defined test methods.



Rheocalc32 Software Optional

Get total control of your instrument and test parameters

Automatically control and collect data with Rheocalc32 and a dedicated computer. Rheocalc32 can analyze data, generate multiple plot overlays, print tabular data, run math models and perform other time-saving routines. Data can be saved in the program or exported to Excel.



Wingather Software Optional

Data collection software to collect, analyze and record test data

Wingather software provides an easy way to gather data and plot graphs while creating permanent test records. Data can be saved in the program or exported to Excel.



Applications

Consider application and viscosity range when selecting model (LV, RV, HA, HB)

LV SERIES – LOW VISCOSITY

Adhesives (solvent base)
Biological Fluids
Chemicals
Dairy Products
Inks
Juices
Oils / Solvents
Pharmaceuticals
Polymer Solutions

RV SERIES – MEDIUM VISCOSITY

Adhesives (hot melt)
Asphalt (SHRP)
Ceramic Slurries
Food Products
Gums
Ointments / Creams
Paints / Inks / Coatings
Paper Pulp
Shampoos / Lotions

HA/HB SERIES – HIGH VISCOSITY

Caulking Compounds / Putty
Chocolate
Epoxies
Inks (ballpoint, offset, lithographic)
Pastes
Peanut Butter
Roofing Compounds
Sealants
Tars